

LEADING THROUGH HEALTH SYSTEM CHANGE:

A PUBLIC HEALTH
OPPORTUNITY

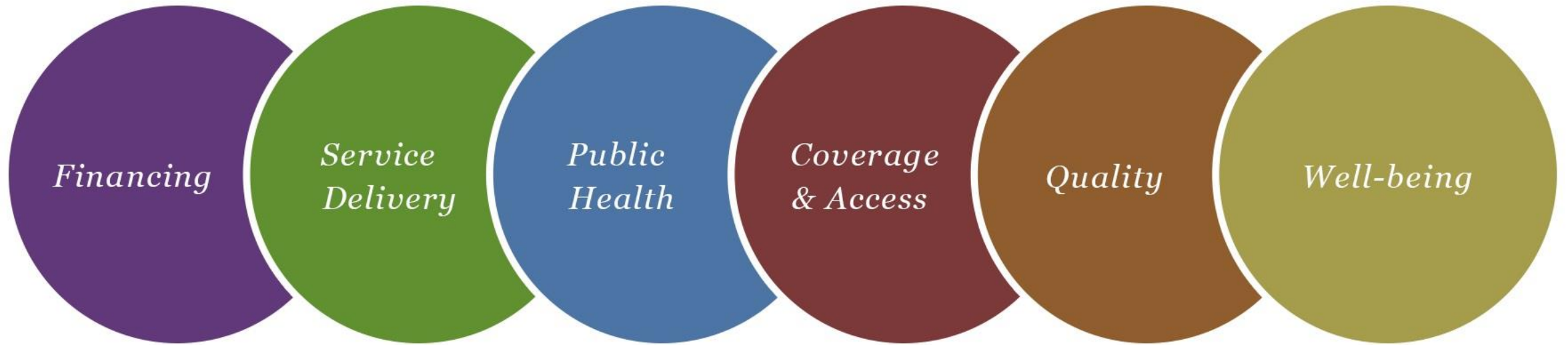


Presenter Disclosures

The following personal financial relationships with commercial interests relevant to this presentation existed during the past 12 months:

- No relationships to disclose.

IMPLICATIONS IN THE AFFORDABLE CARE ACT



THE OPPORTUNITY FOR PUBLIC HEALTH:

```
graph LR; A[Address technical & adaptive challenges] --> B[Think systemically]; B --> C[Strategic action & innovation];
```

*Address
technical &
adaptive
challenges*

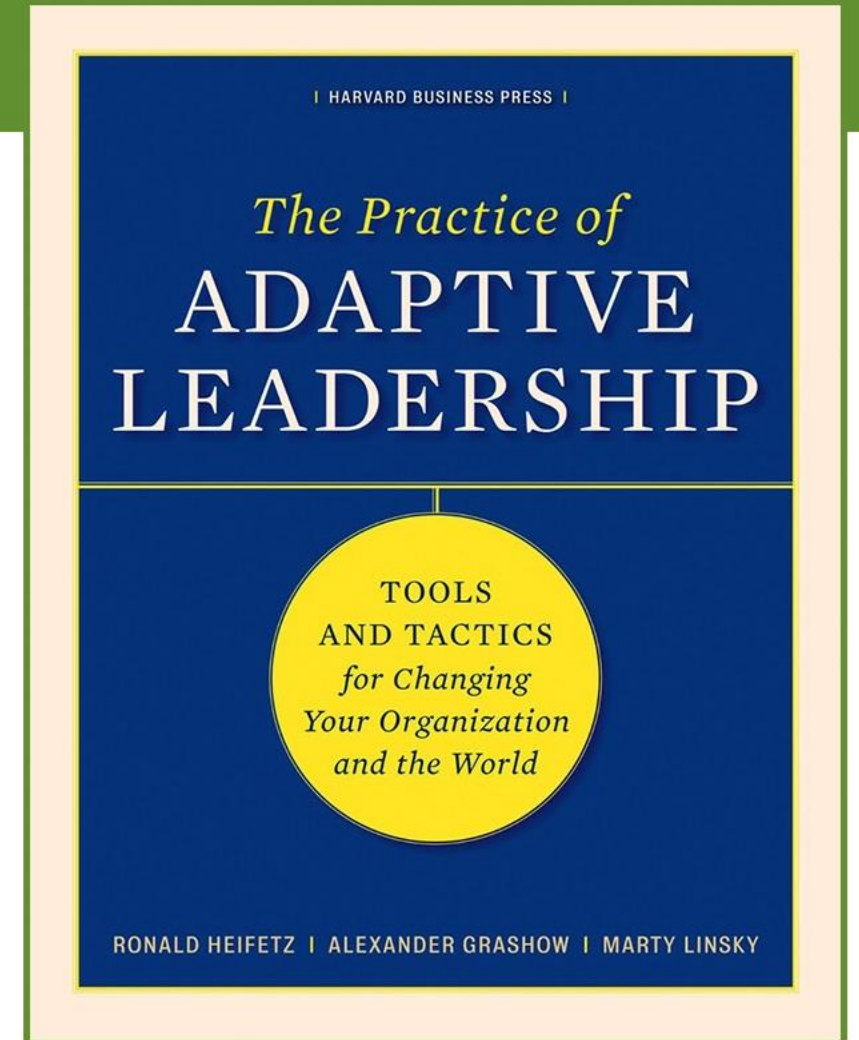
*Think
systemically*

*Strategic
action &
innovation*

THE PRACTICE OF ADAPTIVE LEADERSHIP

Linsky & Heifetz

- Difference between technical & adaptive challenges
- Provide a framework



TECHNICAL VS. ADAPTIVE CHALLENGES CHART

Technical Challenges

- Easily defined
- Obvious proven solution
- Expert to call to solve the problem
- Can be resolved through Standard Operating Procedures (SOPs)

Examples

- Building a hospital
- Fixing a broken computer
- Implementing health reform

Adaptive Challenges

- Hard to define
- No clear solution
- No expert who can solve the problem
- Perhaps new, never seen before

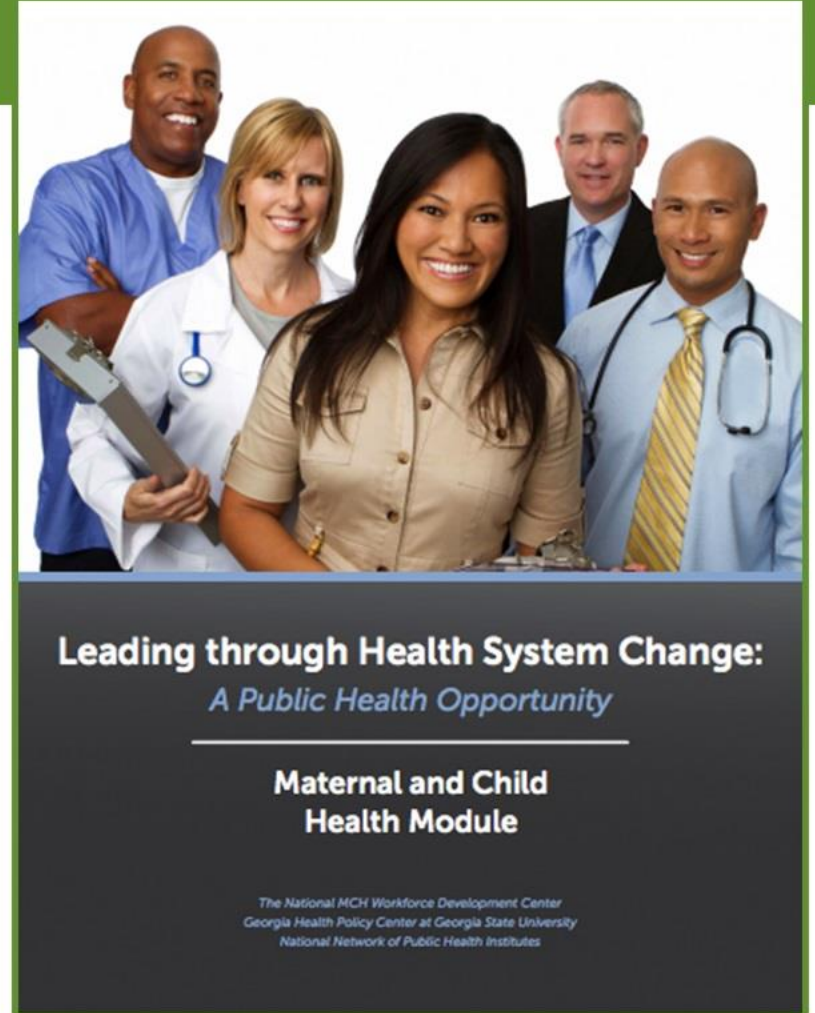
Examples

- Eliminating poverty
- Reforming public education
- Implementing health reform

THE MATERNAL AND CHILD HEALTH MODULE

www.acaplanningtool.com

- No Cost
- Online portal
- PDF workbook
- Videos & Modules
- Save your work and revisit any time!



5 STEP PLANNING PROCESS:



STEP 1: Define your question



STEP 4: Apply adaptive actions related to your question



STEP 2: Collect information about your question related to the affordable care act



STEP 5: Create a simplified implementation plan



STEP 3: Think about the feasible options and select one to begin your analysis

www.acaplanningtool.com

STEP ONE: Define your question.

How can Title V professionals identify & monitor improvements to maternal & child health outcomes resulting from health system transformation?

STEP TWO: Collect information about your question related to the Affordable Care Act & other health system transformations.

**Insurance
Access**

1

**Coverage of
Preventive
Health Services**

2

**Community
Benefit**

3

STEP THREE: Think about the feasible options & select one to begin your analysis.

Option 1:

Continue to provide direct health care services to women & children, including children with special health care needs

Option 2:

Work across agency boundaries to provide access to enabling services.

Option 3:

Facilitate efficient and effective provision of integrated population-based services.

Option 4:

Take or assume a leadership role in building & developing supportive infrastructure for systems serving mothers and children.

STEP FOUR: Apply adaptive actions related to your question.

*Public health practitioners must learn as they go,
making sense of what is happening as it unfolds
and adjusting accordingly.*

8 ADAPTIVE ACTIONS:

1. Influencing Decisions
2. Educating Others
3. Planning Under Uncertainty
4. Staying Abreast of New Information
5. Creating New Partnerships
6. Building Workforce Capacity
7. Building Information Technology Capacity
8. Building Care Coordination Capacity

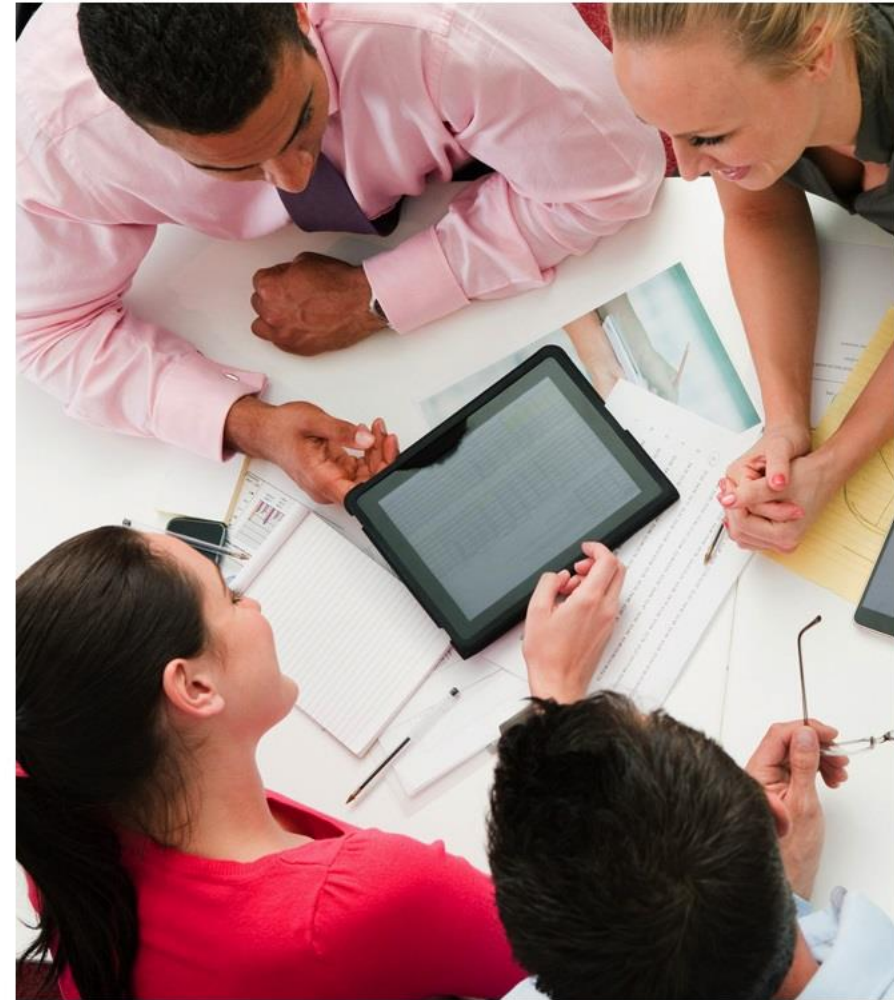


STEP FIVE: Create a simplified implementation plan.

*Step 5 starts to transform ideas into reality
with the building of the key elements of
an implementation plan.*

STAFFING:

- Program implementation
- Project guidance
- Determine the most effective structure



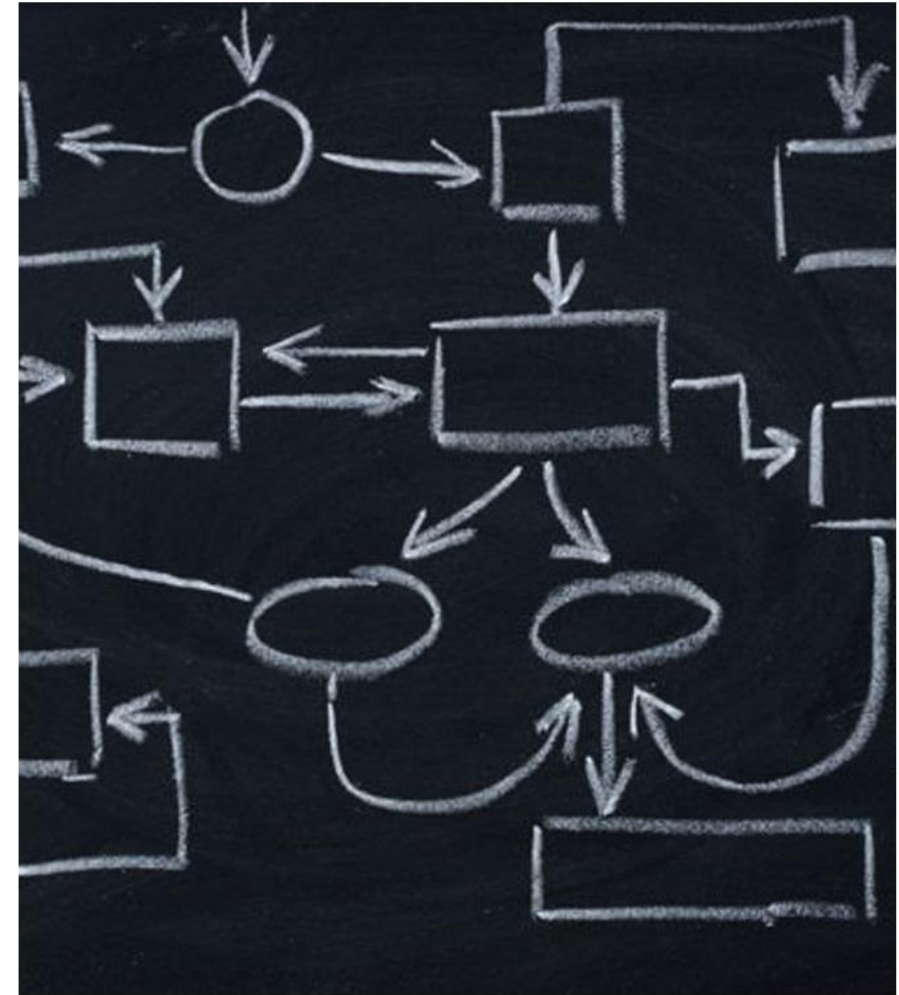
BUDGET & FUNDING STRATEGY:

- Project your costs
- Minimum of three years
- Include one-time cash expenditures
- Line item budget



MANAGEMENT PLAN:

- Manage new activities & staff
- Simple implementation plan
- MCH Planning Tool Module





National **MCH** Workforce Development Center

Advancing Health Reform Implementation

Access the
Planning Tool and
MCH Module
www.acaplanningtool.com

The screenshot displays the 'MCH Overview' page of the 'Leading through Health System Change' website. The page features a navigation menu on the left with the following items: MCH Overview, MCH Step 1: Define Your Question, MCH Step 2: Collection Information, MCH Step 3: Think about Feasible Options, MCH Step 4: Apply Adaptive Actions, and MCH Step 5: Create Plan. The main content area includes links for 'Overview Video', 'How to Navigate this Website', and 'PDF Version of the Planning Tool'. A video player is embedded, showing a play button and a tip: 'Use the "Next" and "Previous" buttons to navigate the interactive module. There is no audio in this module.' The page footer contains logos for the Georgia Health Policy Center and the National Network of Public Health Institutes.



National **MCH** Workforce
Development Center

Thank you!

Glenn M. Landers, ScD
Georgia Health Policy Center
Andrew Young School of Policy Studies
Georgia State University

acaplanningtool.com
www.ghpc.gsu.edu
www.facebook.com/GeorgiaHealthPolicyCenter
ghpc@gsu.edu