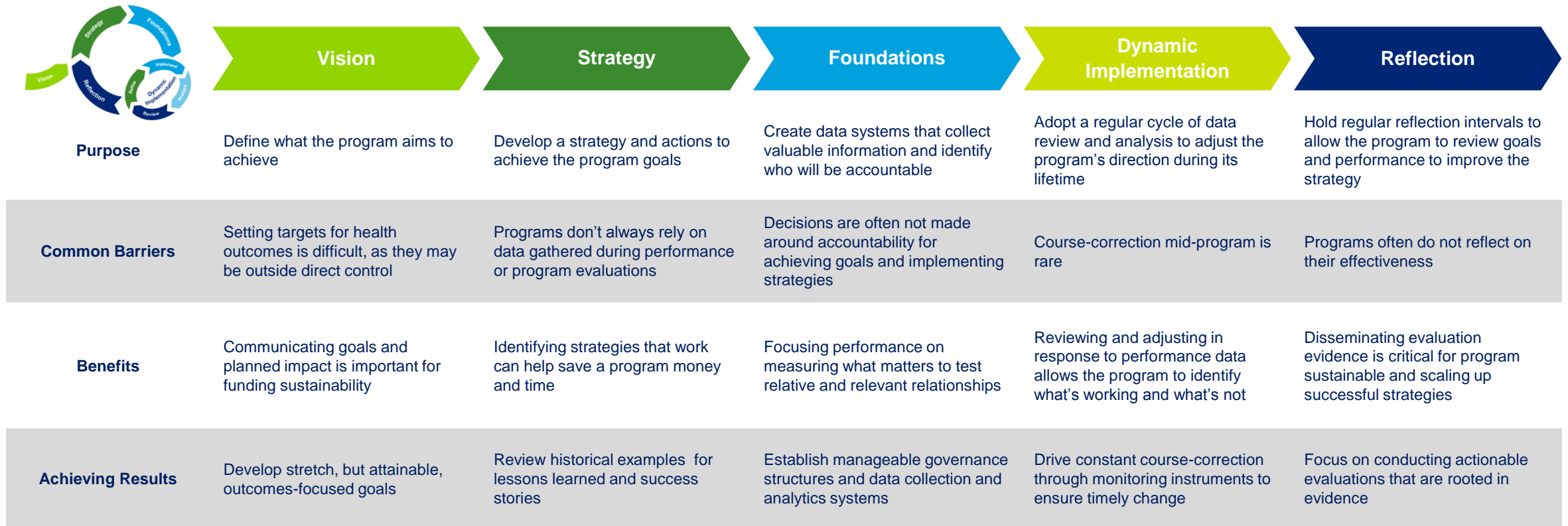


Effective Evaluation for Cross-Cutting Programs

Current Context

- Programs must **provide evidence for the cost-effectiveness** of interventions
- Leading public health **practices are often not shared or scaled-up** due to funding limitations
- **Demonstrating the long-term benefits** of public health impact is difficult
- Evaluations often suffer from a lack of **evidence-based intermediate measures**
- Many programs may be **downsized due to lack of evidence** of progress
- It's hard to collect **data on the relative performance effectiveness** of programs

Framework



Impact



Contact Information

Christina Cadrecha, MPH | Deloitte Consulting, LLP
ccadrecha@deloitte.com | 404-290-3463

David Rabinowitz | Deloitte Consulting, LLP
drabinowitz@deloitte.com | 404-345-8692

About Deloitte

Deloitte refers to one or more of Deloitte Touche Tohmatsu Limited, a UK private company limited by guarantee, and its network of member firms, each of which is a legally separate and independent entity. Please see www.deloitte.com/about for a detailed description of the legal structure of Deloitte Touche Tohmatsu Limited and its member firms. Please see www.deloitte.com/us/about for a detailed description of the legal structure of Deloitte LLP and its subsidiaries. Certain services may not be available to attest clients under the rules and regulations of public accounting.

This publication contains general information only and Deloitte is not, by means of this publication, rendering accounting, business, financial, investment, legal, tax, or other professional advice or services. This publication is not a substitute for such professional advice or services, nor should it be used as a basis for any decision or action that may affect your business. Before making any decision or taking any action that may affect your business, you should consult a qualified professional advisor. Deloitte shall not be responsible for any loss sustained by any person who relies on this publication.