

- THROUGHOUT LOS ANGELES COUNTY -

# PUBLIC HEALTH SAVES LIVES, SAVES MONEY

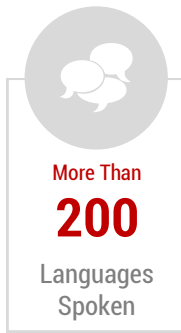
**THE MISSION:** To protect health, prevent disease, and promote the health and well-being of all persons in Los Angeles County.

SOURCE 1

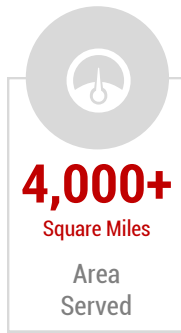
## WHERE WE LIVE AT A GLANCE



SOURCE 1



SOURCE 1



SOURCE 1



SOURCE 1

## QUICK FACTS: THE COSTS

Where do **billions of \$\$\$** go each year?



Overweight and obesity cost LA County **\$6 billion** in health care and lost productivity each year.

SOURCE 5



Diabetes is the **5th** leading cause of death in LA County and costs almost **\$6 billion** each year to treat.

SOURCE 4



Excessive alcohol consumption costs LA County **2,500 lives** and **\$10.8 billion** each year.

SOURCE 2



Smoking and smoking-related diseases cost LA County **9,000 lives** and **\$4.3 billion** each year.

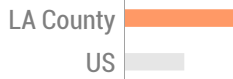
SOURCE 1

Did you know...



**50.9%** of LA County residents report that they are in **less than** very good health.

SOURCE 6



**28.9%** of LA County residents do not have health insurance; **higher** than the national percentage.

SOURCE 8, 9

## HEALTHY PEOPLE IS ROI

**The ultimate return on investment is improved quality of life.**

The LA County Department of Public Health has received a Community Transformation Grant through the Affordable Care Act to support prevention and wellness strategies that aim to:

- 1 Reduce death and disability due to tobacco use by **5%**.
- 2 Reduce the rate of obesity through nutrition and physical activity interventions by **5%**.
- 3 Reduce death/disability due to heart disease and stroke by **5%**.

### PREVENTION-FOCUSED ROI

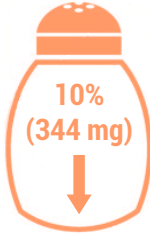
An investment of **\$10** per person per year could result in a ROI of **\$5.60** for every **\$1**.

SOURCE 7

### TOBACCO CONTROL

**75%** of LA County residents are covered by tobacco control and prevention policies.

SOURCE 1



### NUTRITION

A **10%** decrease in population sodium consumption in LA County could result in **\$62 million** in annual cost savings.

SOURCE 3

### HEART HEALTH

Since 2007, over **6,800 women** have received a Heart Disease Risk Assessment through the Women's Health Hotline.

SOURCE 1



A year after the restaurant letter grading program was introduced, there was a **13.6%** decrease in the number of people hospitalized with foodborne illness.

SOURCE 1

### Sources:

1. <http://www.publichealth.lacounty.gov/docs/annualrpt2011L.pdf>
2. <http://publichealth.lacounty.gov/docs/HealthNews/2011marAlcoholRelatedHarms.pdf>
3. <http://publichealth.lacounty.gov/docs/SodiumConsumptionBrief2010.pdf>
4. [http://www.publichealth.lacounty.gov/ha/reports/LAHealthBrief\\_2011/Diabetes/Diabetes\\_2012\\_FinalIS.pdf](http://www.publichealth.lacounty.gov/ha/reports/LAHealthBrief_2011/Diabetes/Diabetes_2012_FinalIS.pdf)
5. <http://www.choosehealthla.com/multimedia/>
6. [http://publichealth.lacounty.gov/epi/docs/SocialD\\_Final\\_Web.pdf](http://publichealth.lacounty.gov/epi/docs/SocialD_Final_Web.pdf)
7. [http://www.hhs.gov/partnerships/aca\\_act\\_and\\_community\\_prevention\\_slides.pdf](http://www.hhs.gov/partnerships/aca_act_and_community_prevention_slides.pdf)
8. <http://latimesblogs.latimes.com/lanow/2010/08/number-of-californians-without-health-insurance-continues-to-increase-ucla-study-finds.html>
9. <http://www.census.gov/hhes/www/hlthins/data/incpovhlth/2011/highlights.html>

Created for the National Public Health Week 2013 Infographic Contest By Tiffany Nicole Tsukuda.