

**Blue Cross/Blue Shield Grant
Collaborative Practice Pilot
Phase 2 Process**

1. Define overall Patient population through data analysis
2. Interview Intervention PCPs
3. Apply criteria to Patient population to create Intervention sample (1)

1. Randomize Intervention sample
2. PCPs prioritize patients in sample
3. PCP/team contacts Patient/Family to make referral to pilot (2)

Patient/Family agrees to referral? (3)

NO

YES

Family Support Specialist obtains consent? (4)

NO

YES

1. Family Support Specialist gets release
2. Family Support Specialist does family baseline interview (5)

1. Family Support Specialist reviews interview visit with Pedi-CMH team
2. Documents (in EPIC) (6)

Any concerns? (7)

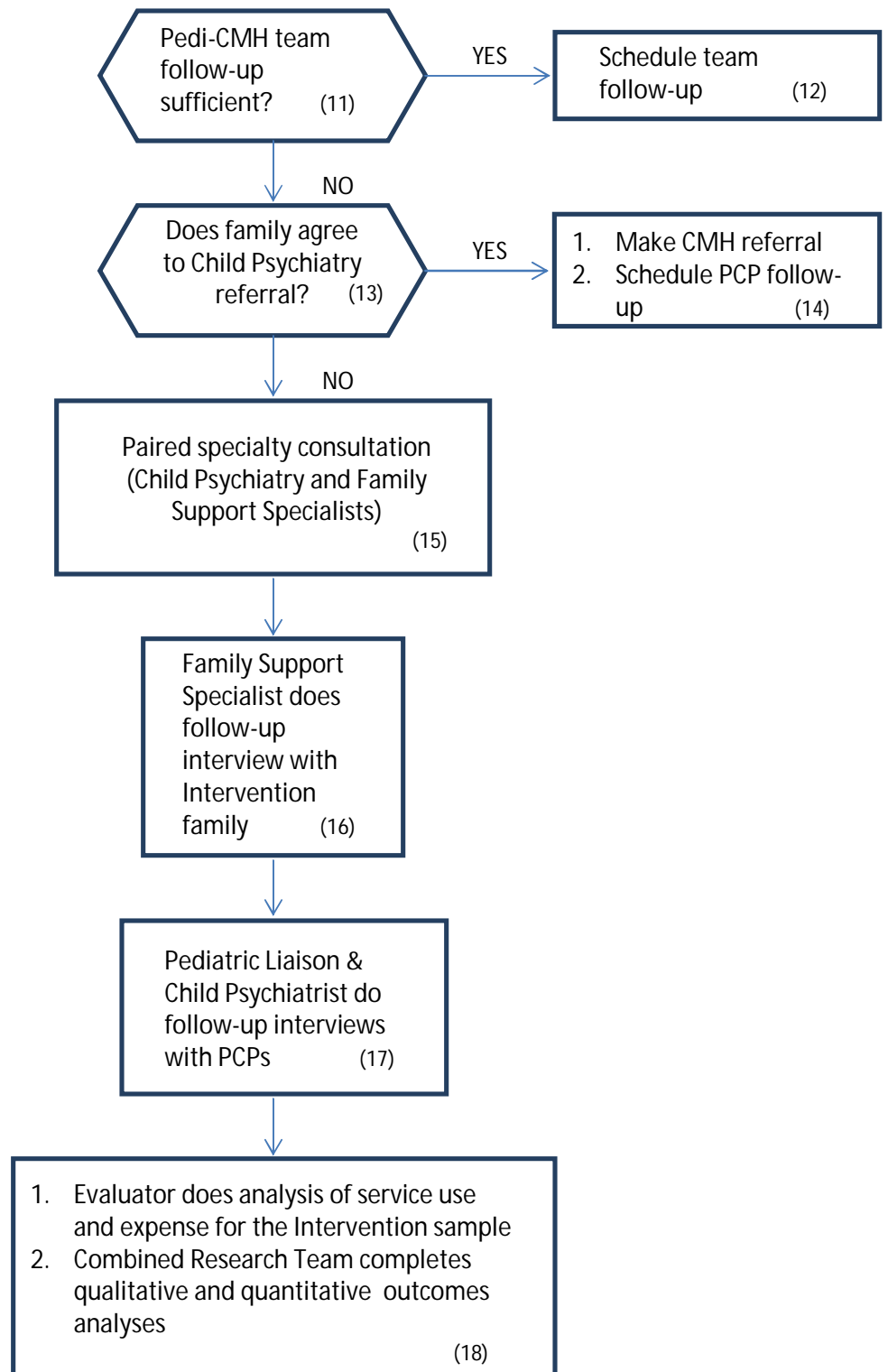
NO

YES

Return to usual care (8)

PCP follow-up call/visit (9)

Re-refer if concerns remain (10)



Notes:

1. Phase 1 data analysis includes preparation and dissemination of an Issue Brief on service utilization and expense trends for children with mental health and substance use needs.
2. *PCP/team* indicates a combination of the Pediatrician, nurses, medical assistants, and clinic social workers.
3. The *Pedi-CMH* team is the collaborative pediatric/child mental health (child psychiatry and family support specialist) team.